

1 μm

Mag = 10.00 K X

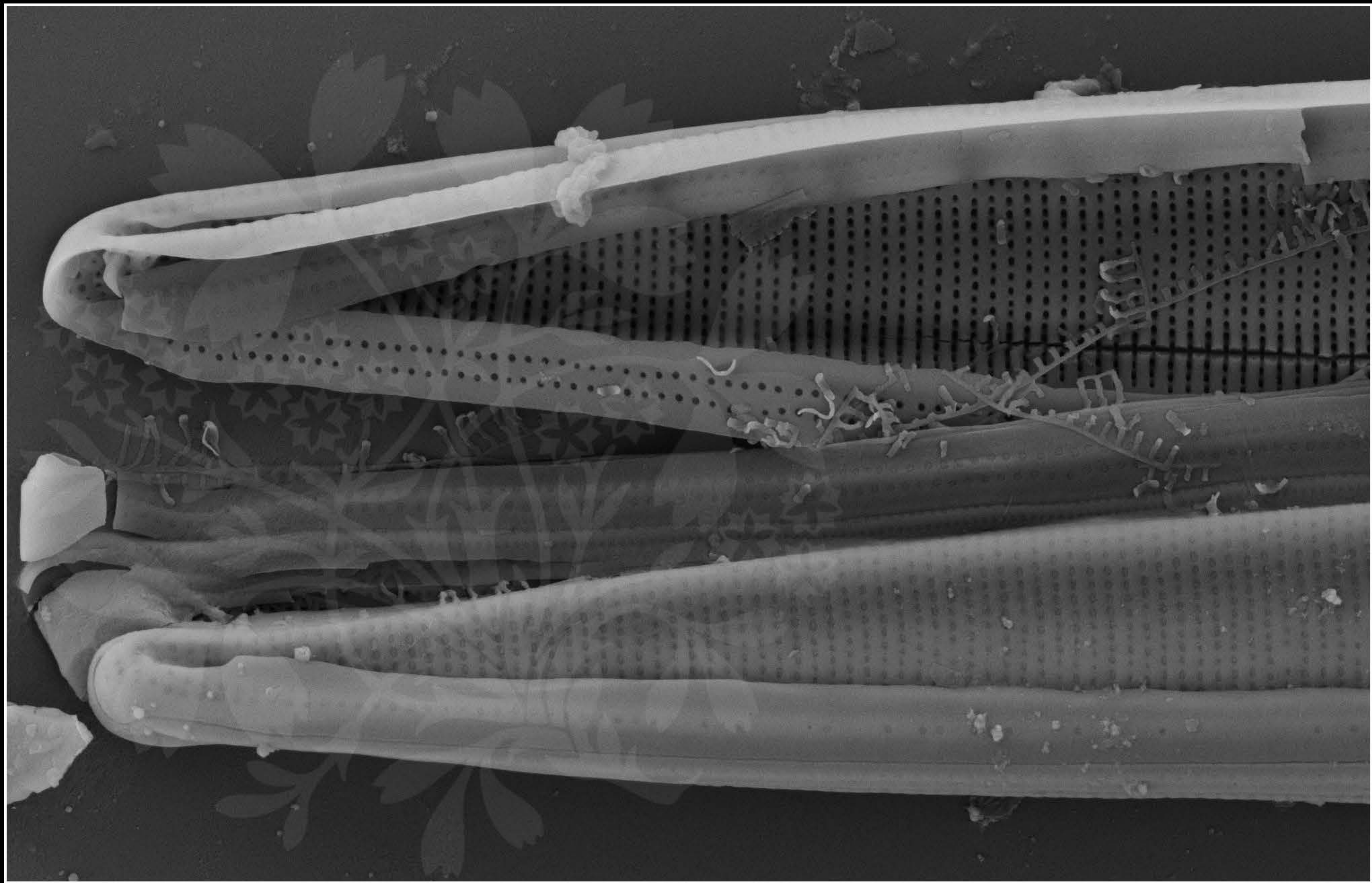
EHT = 5.00 kV

Signal A = SE2 Date :19 Jun 2017

WD = 4.3 mm

File Name = BC_0866_01.tif





1 μm

Mag = 15.05 K X

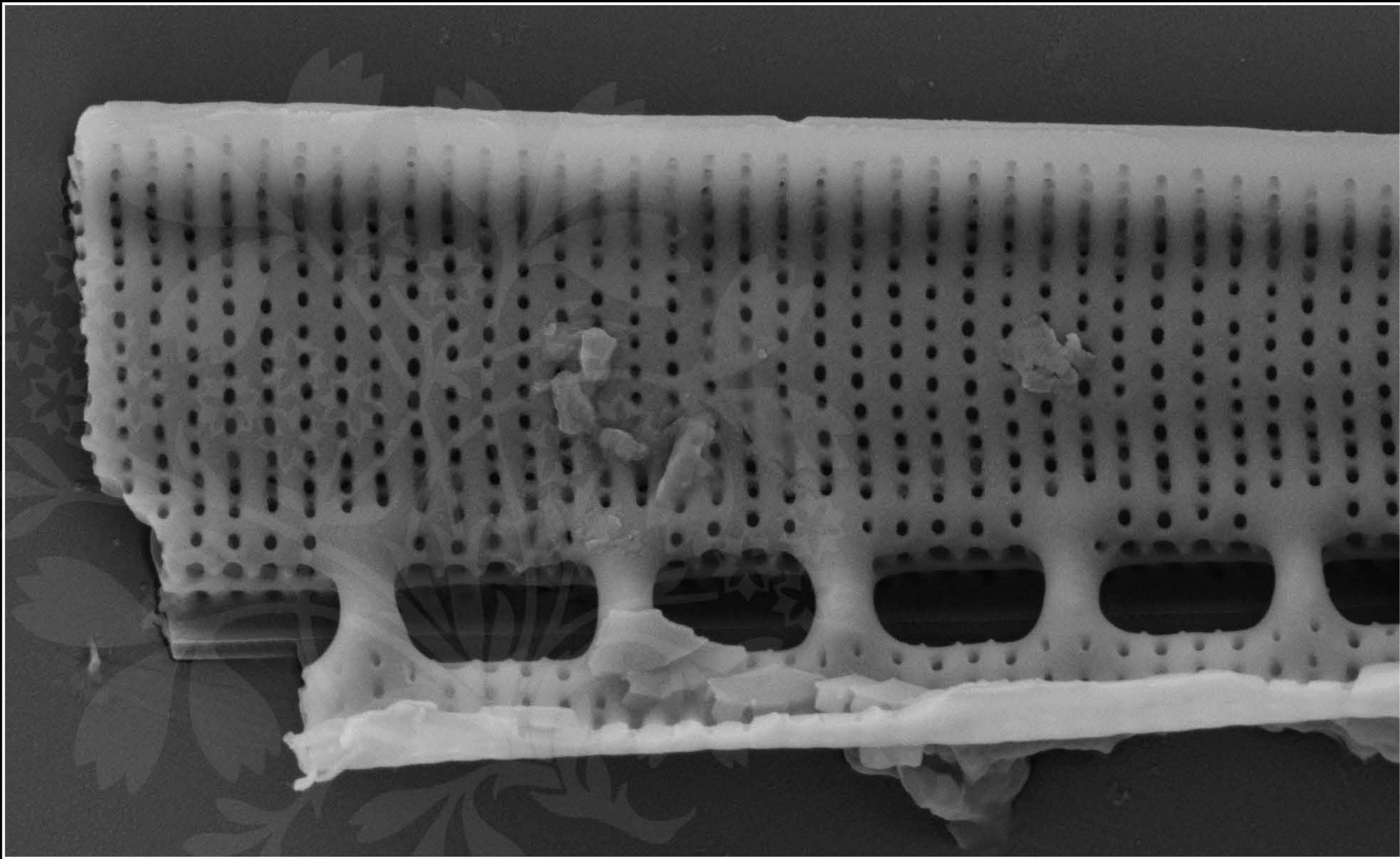
EHT = 5.00 kV

Signal A = SE2 Date :19 Jun 2017

WD = 4.2 mm

File Name = BC_0866_02.tif





200 nm
└─┘

Mag = 30.00 K X

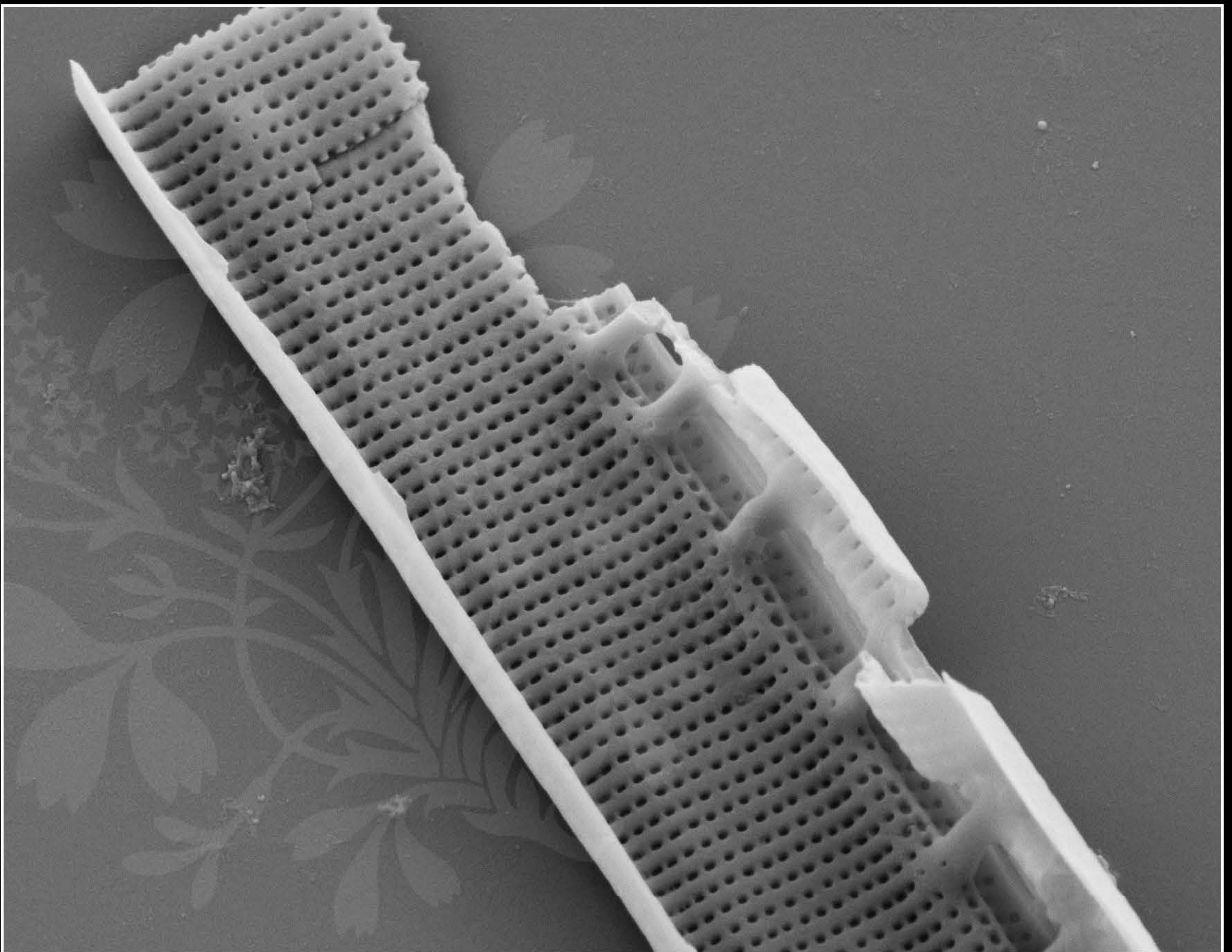
EHT = 5.00 kV

Signal A = SE2 Date :19 Jun 2017

WD = 4.2 mm

File Name = BC_0866_03.tif





1 μm

Mag = 20.00 K X

EHT = 5.00 kV

Signal A = SE2 Date :19 Jun 2017

WD = 4.2 mm

File Name = BC_0866_04.tif

